



cutting through complexity

Deal Advisory

Healthcare & Life Sciences



Dedicated professionals serve all major segments of the healthcare and life sciences industry

Buy-Side

Overview

KPMG LLP (KPMG) has a dedicated team of over 100 healthcare and life sciences Deal Advisory professionals across the U.S. including 12 partners and managing directors. Our team was strategically developed with individuals who have significant deal experience advising clients on M&A transactions paired with individuals who have worked in top healthcare organizations, who bring operational perspectives to transactions and integrations. We are able to provide you with advice that can help manage risks and take advantage of opportunities.

U.S. & Global Healthcare Presence

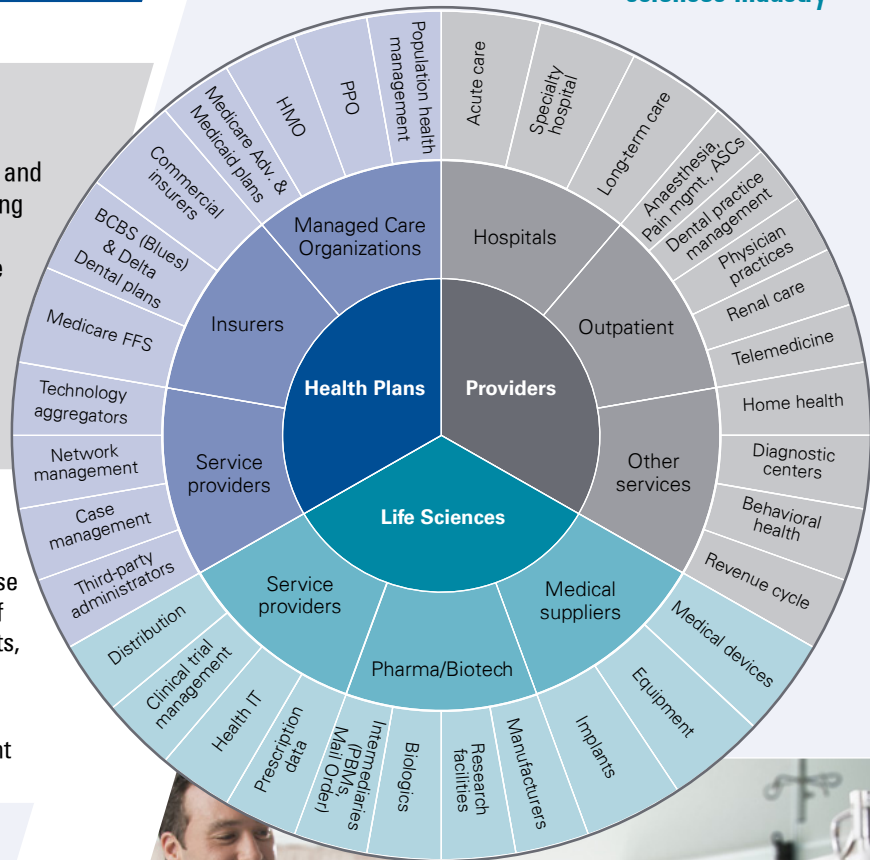
Our U.S. dedicated healthcare and life science team of over 1,800 professionals includes 100 Deal Advisory professionals whose knowledge covers the entire landscape of healthcare. Our team of experienced deal advisors has assisted clients across all segments, including health plans, providers, and life sciences companies.

Convergence is blurring the lines within these segments and our teams have worked alongside our clients who are at the forefront of transforming the business of healthcare.

Specifically, in the U.S. KPMG serves:

- 22 of top 25 health insurers
- Approximately half of the top 200 healthcare systems
- 20 state governments for the establishment of health benefit exchanges
- All of the top 25 global life sciences companies
- 9 of top 10 medical device companies
- 8 of the top 10 Biotech companies

Outside the U.S. we collaborate with over 3,500 healthcare and life sciences professionals from our network of member firms to support our clients executing global deals.



Contact a member of our Healthcare Deal Advisory Team



Bill Baker
National Partner In Charge
214-840-2519
billbaker@kpmg.com



Brett Glover
Managing Director
214-840-8579
bglover@kpmg.com



Janet Nicoll
Managing Director
404-222-3692
jnicoll@kpmg.com



Kevin Staab
Lead Payor, Managing Director
303-382-7173
kstaab@kpmg.com



Andrew Getz
Lead Pharmaceutical, Managing Director
404-658-5123
agetz@kpmg.com



Teresa Gregg
Managing Director
303-382-7625
teresagregg@kpmg.com



J. Preston Parker
Lead Integration & Separation Partner
703-585-9997
prestonparker@kpmg.com



Andrew Stephenson
East Lead Partner
212-872-6031
astephenson@kpmg.com



Darron Gill
Partner, Houston
713-319-2545
dgill@kpmg.com



Chris Mercier
Corporate Finance Managing Director
312-665-8091
cmercier@kpmg.com

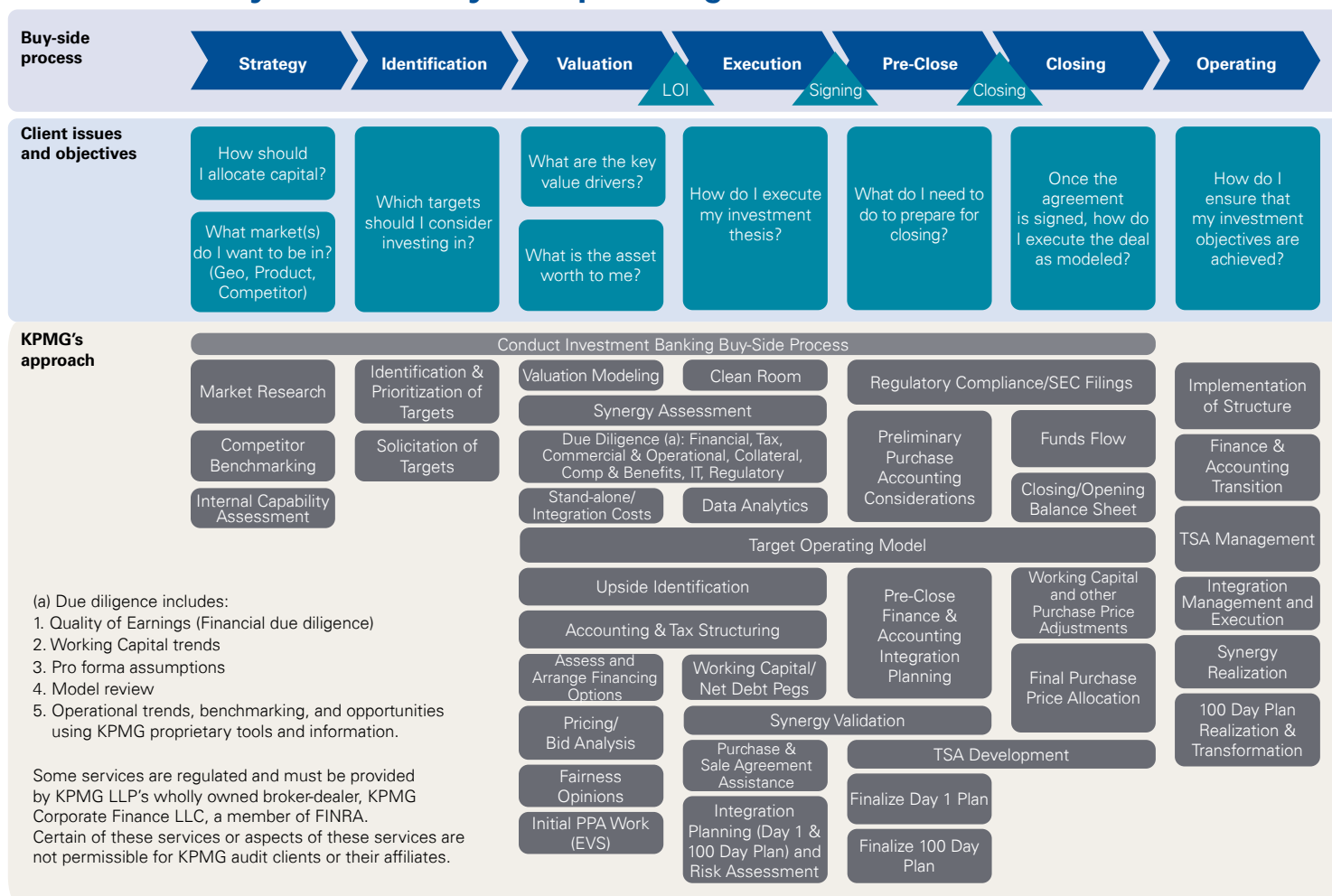


Maureen Spivack
Corporate Finance Managing Director
212-954-4248
mspivack@kpmg.com



Carole Streicher
Midwest Lead Partner
312-665-2138
cstreicher@kpmg.com

We can assist you from early deal planning toward desired business results



Experienced professionals helping clients create value through an integrated approach



We serve clients across the entire Healthcare Industry



Select Corporate Clients

- Abbott
- Acadia Healthcare
- Actavis/Allergan
- AmSurg
- Barnabas Health
- Baxter
- Baylor, Scott & White
- Beacon Health Options
- BJC Healthcare
- Blue Shield of California
- Cigna
- Covance, Inc
- Daiichi Sankyo
- DaVita Healthcare Partners
- Express Scripts, Inc.
- Florida Blue
- Henry Schein
- Hospira
- Hospital Corporation of America (HCA)
- Kindred Healthcare
- LifePoint Hospitals Inc.
- Medtronic
- Monsanto Company
- Northside Hospital
- Novartis
- Owens & Minor
- Sanofi-Aventis US, LLC
- Sheridan Healthcare
- Stryker
- Surgery Partners
- Tenet Healthcare Corporation
- United Healthcare
- Virtual Radiologic Corporation

Select Private Equity Clients

- Blue Wolf Capital Partners
- Court Square Capital Partners
- Diamond Castle Holdings
- Formation Capital
- General Atlantic
- GI Partners
- Great Point Partners
- H.I.G. Capital, Inc
- Irving Place Capital (IPC)
- Kohlberg Kravis Roberts & Co (KKR)
- KRG Capital Partners
- Moelis Capital Partners
- Oak Hill Capital Partners
- Sterling Partners
- TA Associates
- The Riverside Company
- Warburg Pincus
- Water Street Healthcare Partners
- Waud Capital Partners