

Management Planning and Assistance

Rapid Response team

Leveraging a wealth of management, business continuity, and program management experience along with our large global footprint, the KPMG Rapid Response team helps organizations manage the disruption of COVID-19 on the interconnected functions of the business.



Value proposition

Establishing a centralized, well-oiled response function is essential to minimize threats to financial stability, operations, and supply chains that may result from a post COVID-19 environment.

Through the establishment of a centrally responsible response team scalable to the business's needs with local, on-site, or remote support, *together*, we assess and prioritize current and potential risks. Our governance structures leverage standardized technologies and automation to help manage project tracking and reporting, engage and inform key stakeholders, and implement and drive mitigation tactics.

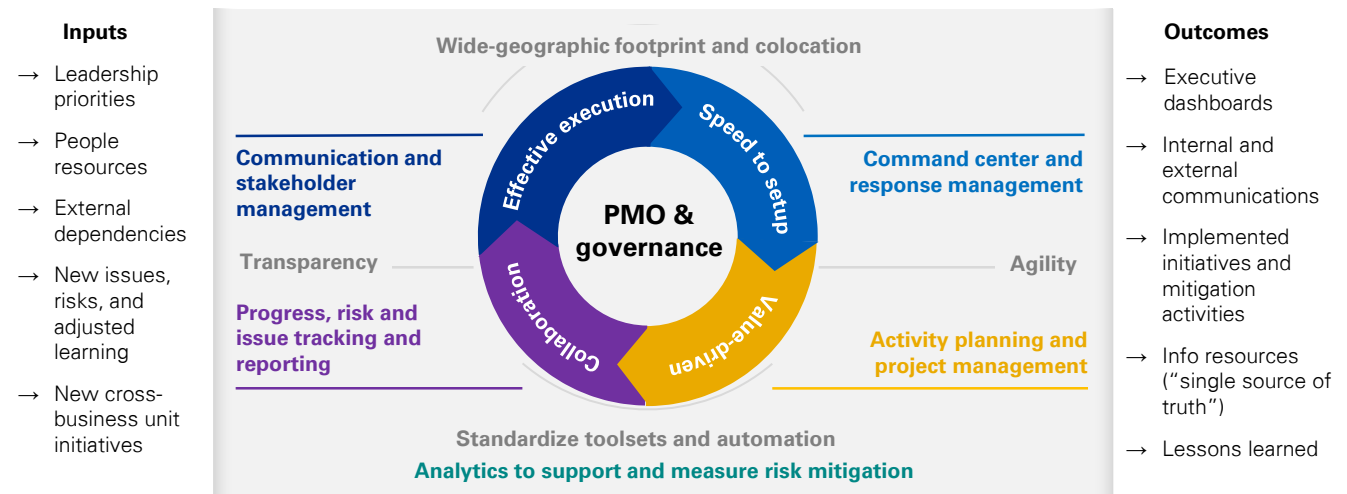
We help organizations focus on the right things by assessing the current state and translating response strategies into tactical initiatives to achieve tangible outcomes that are aligned with leadership priorities, bringing order to the disruption.



Triggers and pain points

- Continuous disruption impacting multiple business units, functions, and/or locations
- Unclear priorities and/or disparate and uncoordinated response efforts
- Lack of tools and automation to enable program management, collaboration, communication, and mitigation activities
- Lack of planning for size, scale, and complexity of a disruptive event leading to resource constraints or misalignment
- Inadequate risk assessment, contingency and scenario planning, playbooks, tabletop exercises, or training
- Inability to assess, mitigate, or manage risk related to in-progress construction or asset/infrastructure operations

Management Planning and Assistance Framework



Qualifying questions

- Does your organization have an established framework or strategic approach to leverage?
- Is your organization flexible enough to rapidly mobilize teams and resources in the necessary locations?
- Have you defined scenario- and trigger-based portfolios of actions and escalations to be implemented?
- Does your organization have access to enablement tools to optimize response and facilitate a faster route to resolution?
- How do you plan to provide the governance to mitigate the risk of misinformation, prevent disparate conflicting efforts across functions, and align the organization behind a unified management operation?
- How will your organization ensure the safety, support, and sustained productivity of your people as they adjust to new ways of working?
- How do you plan to support the intake of open communication flows and feedback from a multitude of internal and external sources, while providing an output that stems from a centralized source to ensure consistent messaging and transparency?
- What ways might the definition of "success" need to evolve during this period? How will your organization demonstrate the ability to determine, adapt, and deliver to a new version of "good" in the midst of extraordinary circumstances?
- Does your organization have the ability to accurately assess the impact to construction in progress and develop appropriate mitigation plans?
- Does your organization have the expertise or resources available internally to effectively manage, or have you identified how you will quickly and reliably source the required capabilities?



Contact us

If you would like more information on how KPMG LLP can assist your organization, please contact:



Rahsaan Shears

Principal, Advisory
Transformation Delivery
T: 404-222-3180
E: rshears@kpmg.com

Some or all of the services described herein may not be permissible for KPMG audit clients and their affiliates or related entities.

kpmg.com/socialmedia



The information contained herein is of a general nature and is not intended to address the circumstances of any particular individual or entity. Although we endeavor to provide accurate and timely information, there can be no guarantee that such information is accurate as of the date it is received or that it will continue to be accurate in the future. No one should act upon such information without appropriate professional advice after a thorough examination of the particular situation.

© 2020 KPMG LLP, a Delaware limited liability partnership and the U.S. member firm of the KPMG network of independent member firms affiliated with KPMG International Cooperative ("KPMG International"), a Swiss entity. All rights reserved. NDP080884-1A

The KPMG name and logo are registered trademarks or trademarks of KPMG International.